

---

# stoneware, inc.

Stoneware webNetwork 5

Exchange Client Configuration

*Stoneware, Inc.*

*Published: January 2006*

---

## **Abstract**

This document will describe how to configure your Microsoft Exchange 2003 Client so that it can access the Microsoft Exchange Server through a webNetwork System.

*This is a preliminary document and may be changed substantially prior to final commercial release of the software described herein. The information contained in this document represents the current view of Stoneware, Inc. on the issues discussed as of the date of publication. Because Stoneware must respond to changing market conditions, it should not be interpreted to be a commitment on the part of Stoneware, and Stoneware cannot guarantee the accuracy of any information presented after the date of publication.*

*This document is for informational purposes only. Stoneware, Inc. MAKES NO WARRANTIES, EXPRESS OR IMPLIED, AS TO THE INFORMATION IN THIS DOCUMENT.*

*Complying with all applicable copyright laws is the responsibility of the user. Without limiting the rights under copyright, no part of this document may be reproduced, stored in or introduced into a retrieval system, or transmitted in any form or by any means (electronic, mechanical, photocopying, recording, or otherwise), or for any purpose, without the express written permission of Stoneware, Inc..*

*Stoneware may have patents, patent applications, trademarks, copyrights, or other intellectual property rights covering subject matter in this document. Except as expressly provided in any written license agreement from Stoneware, the furnishing of this document does not give you any license to these patents, trademarks, copyrights, or other intellectual property.*

*©2006 Stoneware, Inc. All rights reserved.*

*The names of actual companies and products mentioned herein may be the trademarks of their respective owners.*

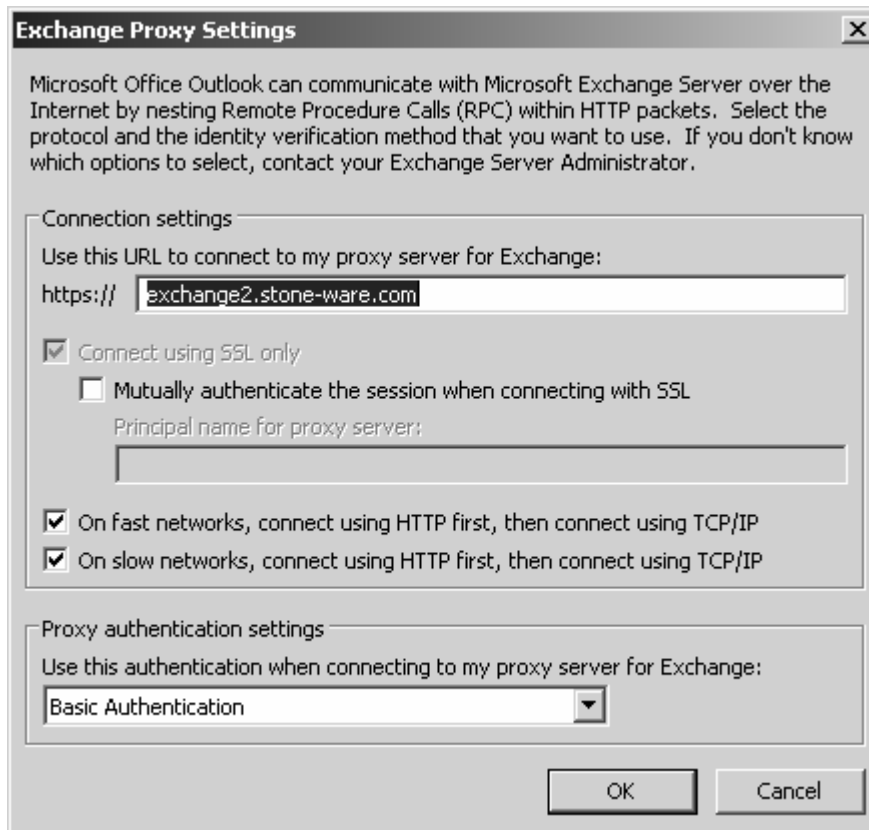
---

## Configuring the Microsoft Exchange Client Profile

The Microsoft Exchange (Outlook) client is typically configured to communicate directly with the Microsoft Exchange Server inside the internal network. Often remote users will have to access their mail through the web enabled interface known as OWA (Outlook Web Access). However, with the implementation of HTTP or RPC, webNetwork administrators can provide remote users with complete access to their Exchange mail system through their Windows Outlook client. To configure the Outlook client so that it can access the Exchange Server remotely through webNetwork follow the steps below:

- **Note** – *the webNetwork administrator must have already enabled access to the Exchange Server through a Virtual HTTP Web Application.*
  
  - **Note** – *you must have the internal DNS name of the Microsoft Exchange server and the Virtual DNS name of the webNetwork Web Application.*
  
  - **Note** – *this document will describe how to modify an existing mail profile that is configured to communicate with your Exchange Server.*
1. From your Windows desktop select START | CONTROL PANEL | MAIL
  2. Select the EMAIL ACCOUNTS button
  3. Select the VIEW OR CHANGE EXISTING EMAIL ACCOUNTS radio button
  4. Select the NEXT button
  5. Select the internal Exchange Server and press the CHANGE button
    - a. If prompted to authenticate you may hit CANCEL
  6. The Microsoft Exchange Server should already be specified (the DNS name of your Exchange Server) – Select the MORE SETTINGS button in the bottom right-hand corner of the screen
  7. Select the CONNECTION tab from the Microsoft Exchange Server screen
  8. Check the CONNECT TO MY EXCHANGE MAILBOX USING HTTP

## 9. Select the EXCHANGE PROXY SETTINGS



10. Enter the VIRTUAL DNS Name of the Exchange web application provided by the webNetwork administrator in the box labeled "Use this URL to connect to my proxy server for Exchange" text box
11. Check the boxes to enable access on both FAST and SLOW networks
12. Select the PROXY AUTHENTICATION SETTINGS to BASIC AUTHENTICATION
13. Select the OK button
14. Select the APPLY button
15. Select the NEXT button
16. Select the FINISH button
17. Open your browser and login to your webNetwork Server
18. Once authenticated you should be able to start your Outlook client and connect to the Exchange Server. You will be prompted to enter your email address and

password before connecting.

---

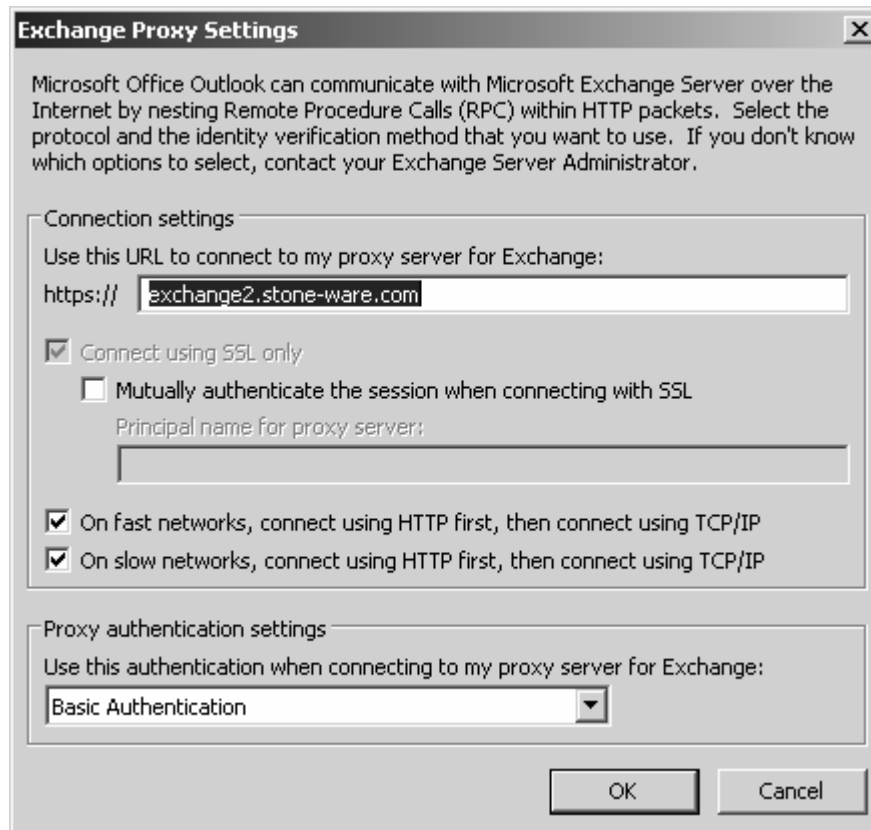
## Creating a New Exchange Client Profile

If this is the first time that you have connected your desktop to an Microsoft Exchange Server or you are connecting your desktop to an additional (secondary) Exchange mail system you will want to create a new MAIL PROFILE for access to the system. Follow the steps below to connect to a new Exchange Mail System.

- **Note** – the webNetwork administrator must have already enabled access to the Exchange Server through a Virtual HTTP Web Application.
- **Note** – you must have the internal DNS name of the Microsoft Exchange server and the Virtual DNS name of the webNetwork Web Application.

1. From your Windows desktop select START | CONTROL PANEL | MAIL
2. Select the SHOW PROFILES button
3. Select the ADD button
4. Create a new profile named REMOTE
5. Select the OK button
6. Select the ADD NEW EMAIL ACCOUNT radio button
7. Select the NEXT button
8. Select the MICROSOFT EXCHANGE SERVER radio button
9. Select the NEXT button
10. Enter the DNS name of the internal Microsoft Exchange Server
11. Enter your Exchange User ID
12. Select the MORE SETTINGS button
  - a. Note – the client may attempt to connect to the Exchange Server and fail. Continue to configure the Exchange client.
13. The Microsoft Exchange Server properties box will be displayed, select the CONNECTIONS tab
14. Check the CONNECT TO MY EXCHANGE MAILBOX USING HTTP

## 15. Select the EXCHANGE PROXY SETTINGS



16. Enter the VIRTUAL DNS Name of the Exchange web application provided by the webNetwork administrator in the box labeled "Use this URL to connect to my proxy server for Exchange" text box

17. Check the boxes to enable access on both FAST and SLOW networks

18. Select the PROXY AUTHENTICATION SETTINGS to BASIC AUTHENTICATION

19. Select the OK button

20. Select the APPLY button

21. Select the NEXT button

22. Select the FINISH button

23. Open your browser and login to your webNetwork Server

24. Once authenticated you should be able to start your Outlook client and connect to the Exchange Server. You will be prompted to enter your email address and password before connecting.