



## **Stoneware webMenus 1.2**

© 2006 Stoneware, Inc

**Note:**

This manual is the property of Stoneware, Inc. It is not to be reproduced, copied, or printed without prior consent from Stoneware, Inc.

# **webMenus 1.2**

## **Installation and Configuration Guide**

---

*by Stoneware, Inc*

*The webMenus Installation and Configuration Guide is designed to provide administrators with the necessary information to install and configure Stoneware's webMenus.*

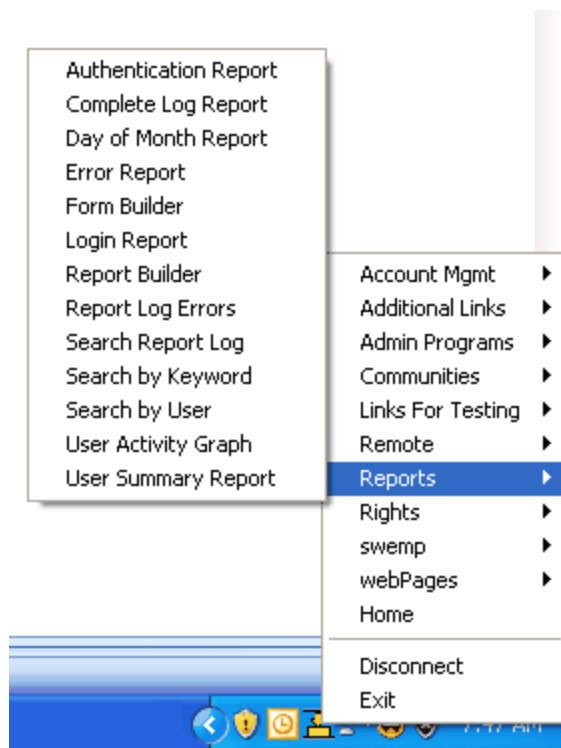
# Table of Contents

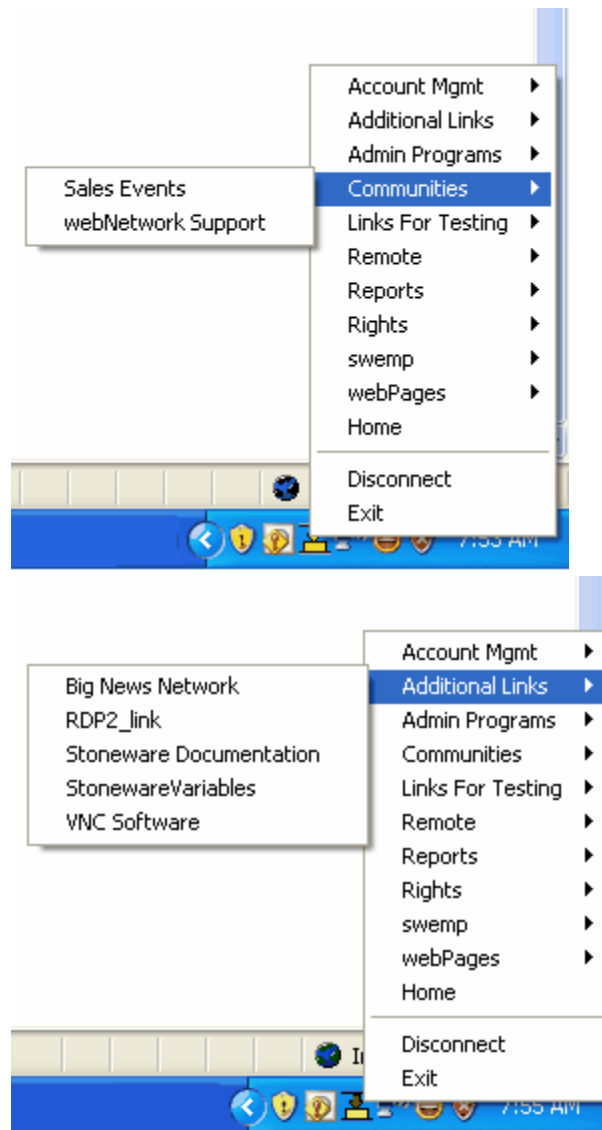
Foreword	0
<b>Part I Introduction</b>	<b>1</b>
1 Welcome .....	1
2 Requirements .....	2
<b>Part II Installation</b>	<b>4</b>
1 Overview .....	4
2 webMenus Installation .....	4
3 Starting webMenus .....	8
4 webMenus Configuration .....	9
<b>Part III Advanced Features</b>	<b>11</b>
1 Browser Options .....	11
2 Launch Properties .....	13
3 Single Sign-on .....	15
<b>Index</b>	<b>0</b>

# 1 Introduction

## 1.1 Welcome

Stoneware's webMenu 1.2 provides users the freedom to access webNetwork applications and services from the system tray of their local desktop. With a simple click of the mouse, webNetwork users can access secured remote applications and resources without continually opening and closing Internet browsers or navigating a series of HTML pages and login screens.





## 1.2 Requirements

### Client Requirements

Stoneware's webMenu is a client-side access product that provides Windows workstations with access to webNetwork applications and services through the desktop's system tray. The requirements for Stoneware's webMenu are listed below.

- Operating Systems
  - Windows XP Home
  - Windows XP Professional
  - Windows 2000
  - Windows 2003
  
- PC with 300 megahertz or higher processor clock speed recommended; 233 MHz minimum required (single or dual processor system);\* Intel Pentium/Celeron family, or AMD K6/Athlon/Duron family, or compatible processor recommended
- 128 megabytes (MB) of RAM or higher recommended
- 300 (MB) of available hard disk space (includes .Net Framework **286mb** and webMenus **1mb** in size estimation)
- Super VGA (800 x 600) or higher-resolution video adapter and monitor
- Keyboard and Microsoft Mouse or compatible pointing device
- Microsoft's .Net Framework (included in SP2 for Windows XP)

### **webNetwork Requirements**

webMenus 1.2 supports the following webNetwork and Report Services systems:

- webNetwork 4.0e
- webNetwork 5.0
- webNetwork 5.0x

## 2 Installation

### 2.1 Overview

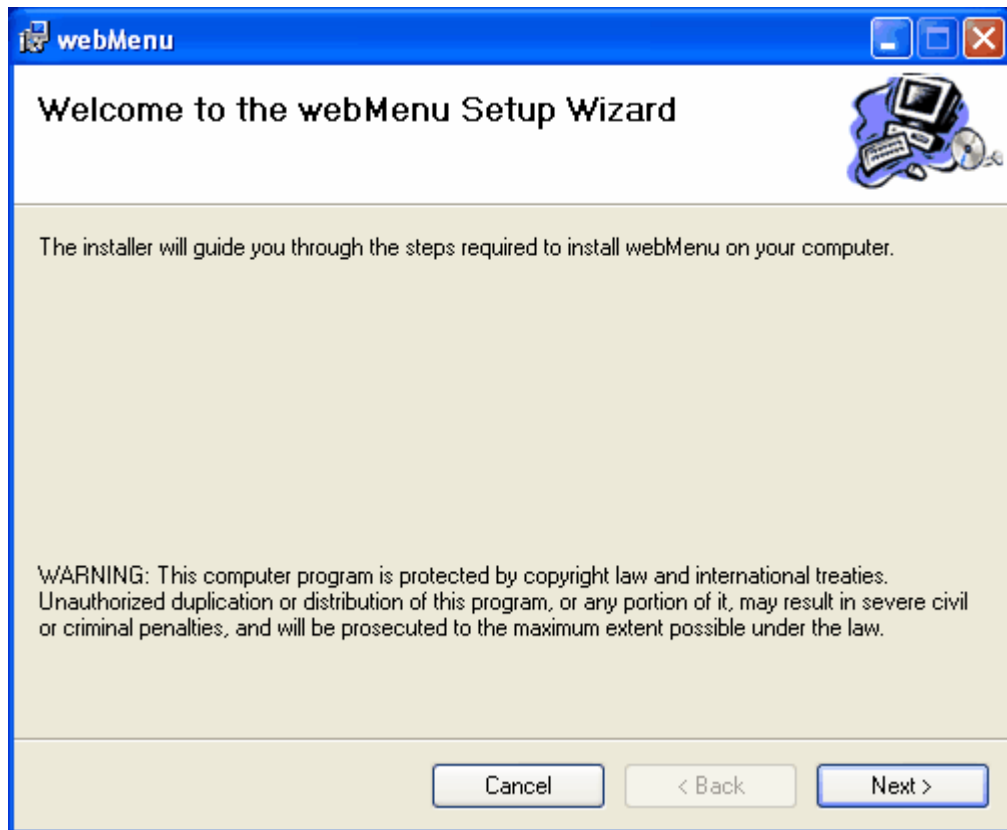
webMenus is a client-side application that communicates via HTTP(s) to the web service agent running on the webNetwork System. The client installation will require the webMenus 1.2 installation that can be retrieved from the Stoneware Download Page. This chapter will discuss how to install the webMenus application on the local desktop and how to configure the webMenus product to communicate with the webNetwork System.

### 2.2 webMenus Installation

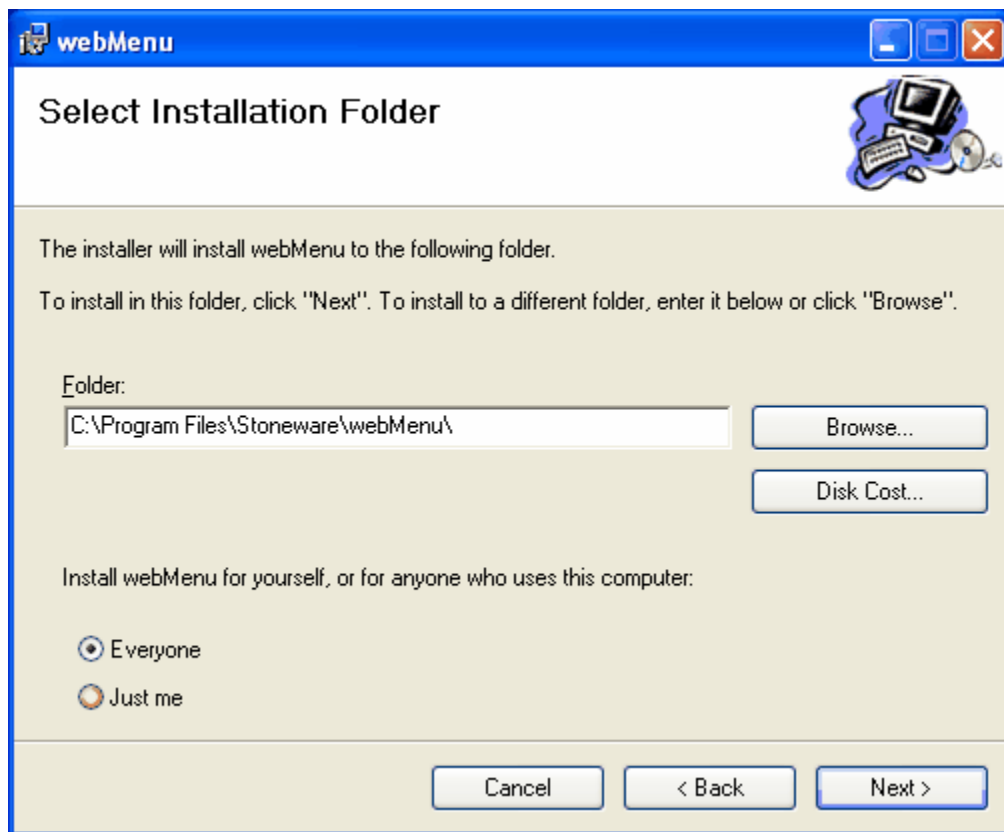
To perform a client-side installation of webMenus follow the directions given below:

***\* Note - the .Net Framework from Microsoft should be applied before installing Stoneware's webMenus***

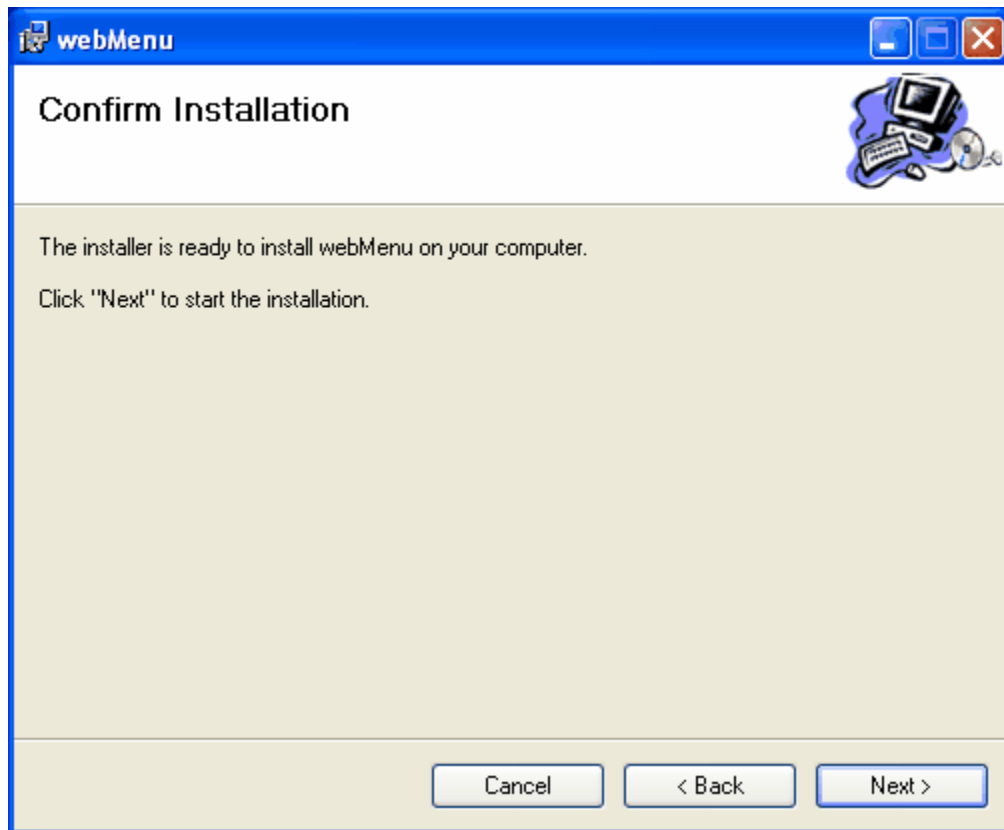
- Microsoft's .Net Framework (included in SP2 for Windows XP)
  1. Click on the webMenus installation file
  2. Select RUN if prompted to verify the publisher
  3. Select the NEXT button to continue through the WELCOME screen



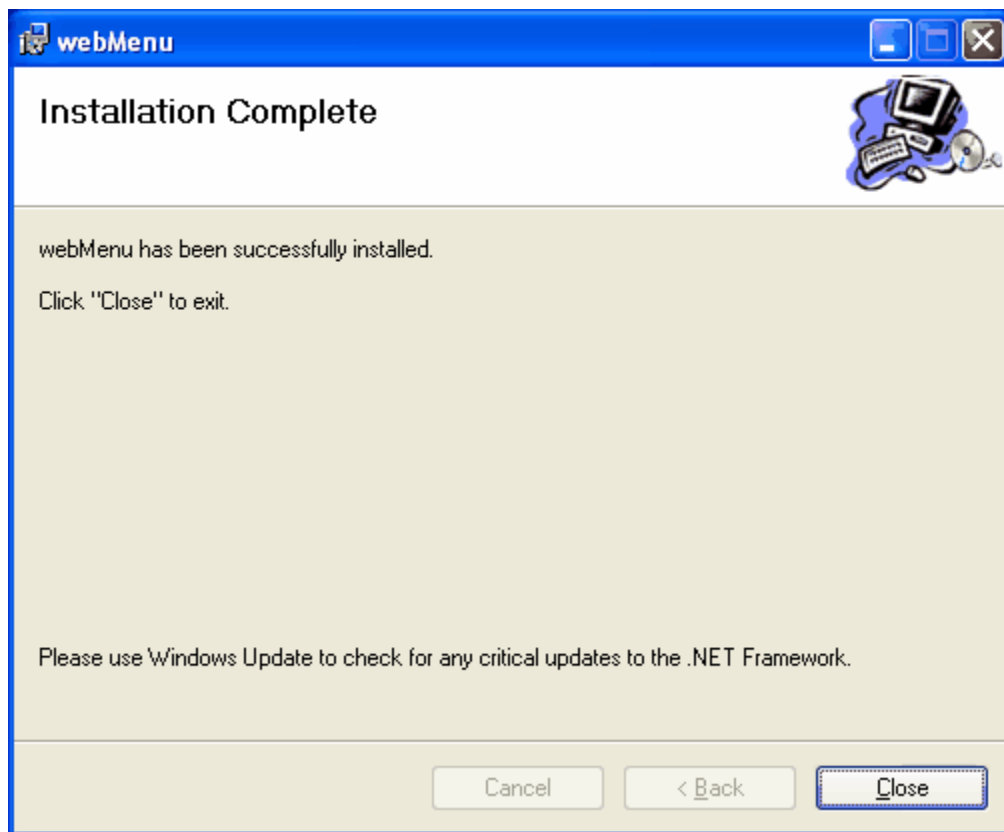
4. Select the installation folder location. By default webMenus is installed into the Program Files directory of the Windows workstation. Select the BROWSE button to change the default installation location. Select DISK COST to determine the file storage requirements on the workstation. When finished select the NEXT button to continue.



5. Confirm the installation by selecting the NEXT button. If you wish to make a change to the installation parameters select the BACK button.



6. Select the CLOSE button to complete the installation.



Next continue to the Starting webMenus section

## 2.3 Starting webMenus

After completing the installation of webMenus you will need to start the application. webMenus can be started in several different ways, however the two basic options are to start it manually or automatically when the desktop is started. The information below will discuss how to start webMenus.

**Manually** - To start webMenus manually you will need to follow the steps below:

1. Select the START button
2. Select ALL PROGRAMS
3. Select the STONEWARE program group
4. Select the **webMenus** program link

**Automatically** - users that wish to have webMenus start automatically when the desktop starts will need to add a shortcut icon to the STARTUP PROGRAMS of their desktop that will automatically launch the webMenus application. Follow the steps below to add a shortcut in the STARTUP group.

1. Open **Windows Explorer**
2. Browse the Windows drive and expand the DOCUMENTS and SETTINGS folder
3. Expand ALL USERS or folder
4. Expand the START MENU folder
5. Expand the PROGRAMS folder
6. Expand the STARTUP folder
7. Select the right frame of the Explorer window and right-click
8. Select NEW | SHORTCUT option
9. Next to the location box select the BROWSE button
10. Browse and select the webMenu executable (c:\program files\stoneware\webMenu\wnWebMenus.exe)
11. Select the NEXT button
12. Enter the Shortcut's Name (i.e. - webMenus)
13. Select the FINISH button

webMenus will automatically start the next time the machine is rebooted or the user logs in.

## 2.4 webMenus Configuration

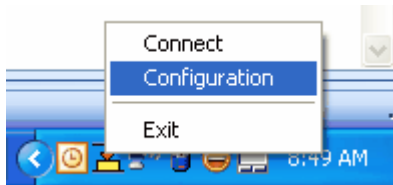
Once webMenus has been started on the local desktop you are ready to configure webMenus to communicate with your webNetwork System. Because webMenus communicates with the webNetwork System over HTTPS you should not have to worry about internal or external firewalls blocking the IP traffic between the two.

To configure the webMenus application to communicate with the webNetwork System follow the steps below:

1. The webMenus icon should appear in the system tray of your local desktop (see below). If this icon does not appear check to verify that you have started webMenus properly and that Microsoft's .Net Framework is installed on your local workstation.



2. Right-click on the webMenus icon in the system tray and select CONFIGURATION



3. Enter the webNetwork information required to connect to the webNetwork System

A screenshot of the 'Configuration' dialog box. The dialog has a blue title bar and four tabs: 'Connection Properties', 'Launch Properties', 'Browser Options', and 'About'. The 'Connection Properties' tab is selected. It contains three text input fields: 'webNetwork Relay Address' with the value 'https://webnetwork.stone-ware.com', 'User ID' with the value 'guest', and 'Password' with the value '\*\*\*\*\*'. Below these fields are three checkboxes: 'Auto Connect At Startup' (unchecked), 'Retry Connection Every Minute' (unchecked), and 'Ignore Certificate/SSL Warnings' (unchecked). At the bottom of the dialog are two buttons: 'Save Changes' and 'Cancel'.

- **webNetwork Relay Address** - IP address or DNS name of a webNetwork Relay. This information should be provided by you webNetwork administrator.

**Note** - include the protocol header in the URL (i.e. **HTTP://** or **HTTPS://**). In most cases the webNetwork System will be running SSL and therefore HTTPS:// should be used as the protocol header.

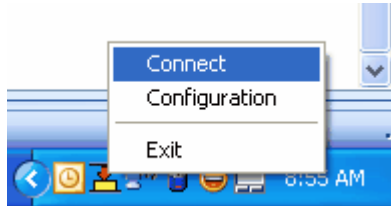
- **User ID** - Enter your webNetwork User ID (this should be your network user

id)

- **Password** - Enter your webNetwork Password (this should be your network password)

4. Select the SAVE CHANGES button when complete

5. Right-click on the webMenus system tray icon



6. Select the CONNECT option

7. When webMenus has connected successfully the system tray icon will change from a red arrow to a green arrow (see below). You should now be ready to access all of your webNetwork applications and resources.



8. To access a webNetwork system application or service simply right-click on the system tray icon and select a menu/link

9. Your default browser should open and bring you directly to the application or service you selected

## 3 Advanced Features

### 3.1 Browser Options

webMenus will launch your default browser automatically and follow any rules that are configured for the default browser. However, if you wish to override the default browser settings you can enter a path to have webMenus start an Alternate browser instead of the default browser. An example of this would be to launch Firefox when accessing applications and services through webMenus even though your machine's default browser is set to Microsoft Internet Explorer.

To set the Alternate Browser follow the steps below:

1. Right-click on the webMenus system tray icon

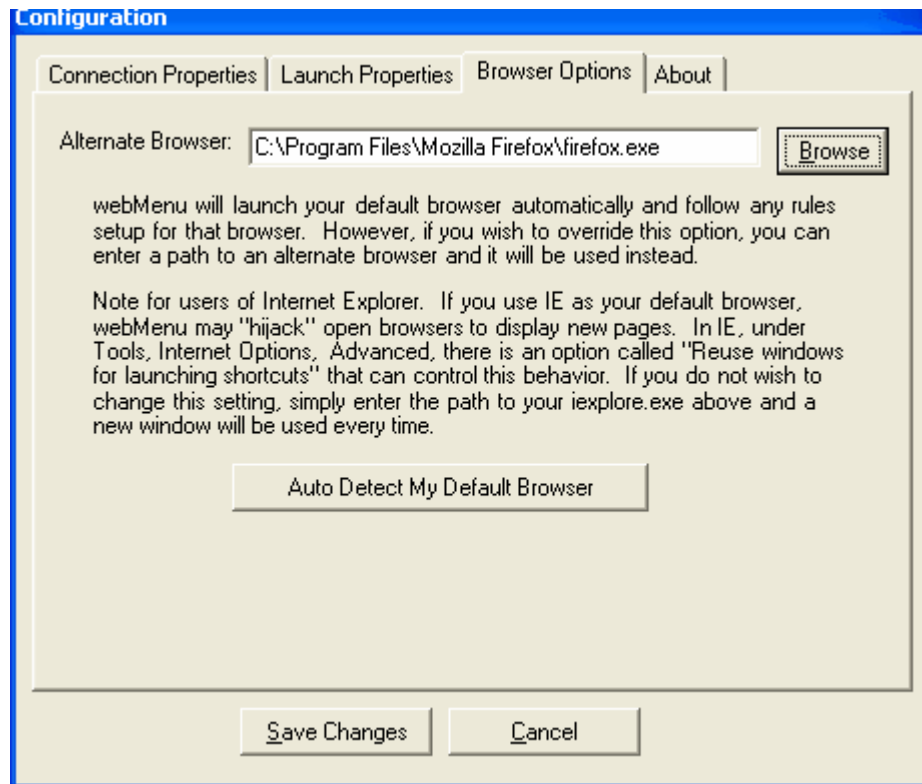
2. Select the DISCONNECT option if you are already logged into the webNetwork System.

Note - you must logout of the system before the CONFIGURATION option will appear on webMenus

3. Right-click on the webMenus system tray icon

4. Select the CONFIGURATION option

5. Select the BROWSER OPTIONS tab at the top of the screen



6. Select the BROWSE button to navigate the local file system and select the browser that should be automatically launched with webMenus

7. Select the SAVE CHANGES button when done

8. Right-Click on the webMenus system tray icon

9. Select the CONNECT option

10. Right-Click on the webMenus system tray icon and select an application or service to verify that the browser selected is launched

*The AUTO DETECT MY DEFAULT BROWSER button will automatically set the webMenus alternate browser to your machine's default browser setting.*

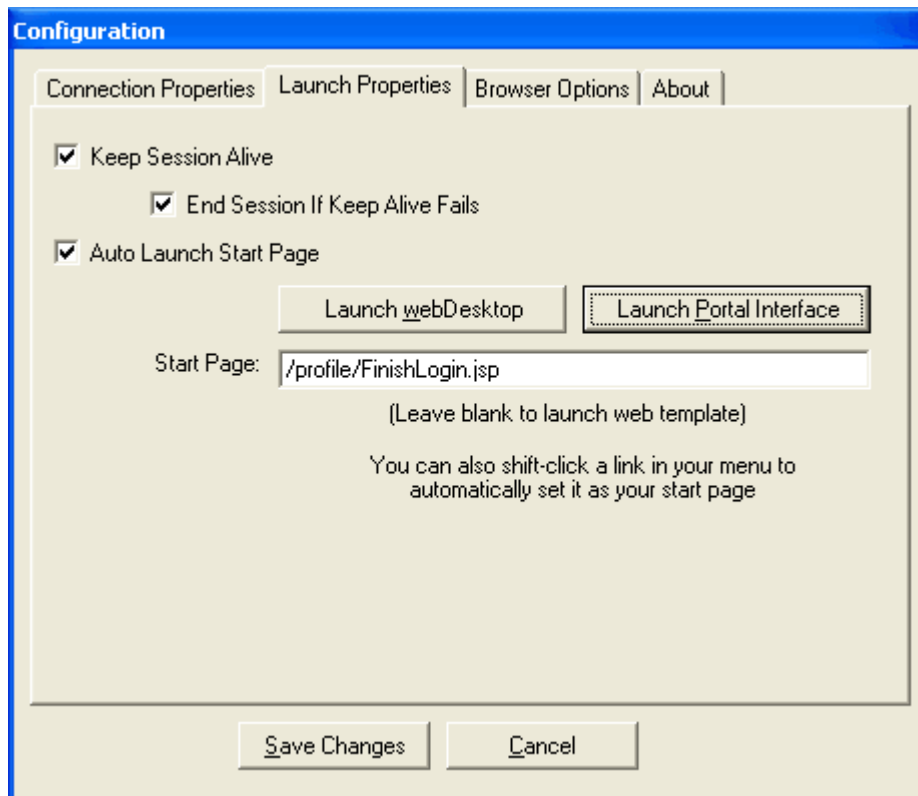
## 3.2 Launch Properties

Launch Properties is responsible for managing the connection between the webMenus application and the backend webNetwork System. Launch properties will determine if webMenus is to keep the user's session alive and what page should be launched when the webNetwork user connects to the system. To access the LAUNCH PROPERTIES screen follow the steps below:

1. Right-click on the webMenus system tray icon
2. Select the DISCONNECT option if you are already logged into the webNetwork System.

Note - you must logout of the system before the CONFIGURATION option will appear on webMenus

3. Right-click on the webMenus system tray icon
4. Select the CONFIGURATION option
5. Select the LAUNCH PROPERTIES tab at the top of the screen



6. Make your launch properties changes
7. Select the SAVE CHANGES button when done
8. Right-Click on the webMenus system tray icon
9. Select the CONNECT option

---

### Session Keep Alive

When enabled, the SESSION KEEP ALIVE option will maintain a user's connection between the desktop and the backend webNetwork System even when there is no activity. This feature will allow a user to remain connected to the webNetwork System even when they walk away from their desktop for an undetermined amount of time. This feature is often used for the home or remote office worker who uses the webNetwork System as their primary corporate access point and wishes to remain connected throughout the workday without always re-authenticating.

**Keep Session Alive** - when checked the webMenus application will communicate with the webNetwork System every 5 minutes to keep the user's session timer alive even when there is no activity.

**End Session if Keep Alive Fails** - when checked the webMenus application will terminate the user's session from the backend webNetwork System if it cannot process a keep alive request

---

### Auto Launch Start Page

When enabled, Auto Launch Start Page is a feature used to open a default portal interface when the webMenus application connects to the webNetwork System. When a user connects they can have one of the following interfaces automatically loaded on the desktop:

**webDesktop** - launches the full webDesktop interface including the menuing system and webDesktop dashboard. The interface is determined by the user's assigned webDesktop Profile set by the webNetwork administrator.

**webDashboard** - launches just the webDesktop Dashboard that displays all personalized components. Menus and links will not be displayed because they are available through the system tray icon provided by webMenus.

**webTemplate** - when the START PAGE textbox is left blank, webMenus will launch the URL set on the user's webTemplate attribute in webAdmin. Only the

webNetwork administrator can set the webTemplate attribute.

**Additional URL** - If a user enters an URL in the START PAGE box it will override all other start pages and load the URL specified. As an example the user can enter `http://www.google.com` as the START PAGE URL. When webMenus starts and connects to the webNetwork System it will automatically launch the Google website in the default browser.

### 3.3 Single Sign-on

webMenus provides the desktop user with the ability to automatically authenticate to the webNetwork System when the webMenus application is started. This feature simplifies access to webNetwork applications and services by automatically passing the user's credentials to the backend webNetwork System. Access to applications and services are simplified by having resources available through the system tray without re-authenticating to the system each time the machine is restarted or the user logs out.

To enable Single Sign-on:

1. Right-click on the webMenus system tray icon
2. Select the DISCONNECT option if you are already logged into the webNetwork System.

Note - you must logout of the system before the CONFIGURATION option will appear on webMenus

3. Right-click on the webMenus system tray icon
4. Select the CONFIGURATION option
5. Select the CONNECTION PROPERTIES tab at the top of the screen

**Configuration**

Connection Properties | Launch Properties | Browser Options | About

webNetwork Relay Address:

User ID:

Password:

Auto Connect At Startup

Retry Connection Every Minute

Ignore Certificate/SSL Warnings

6. Enter the IP Address/DNS name of the webNetwork Relay
7. Verify that there is a user ID and password set in the USER ID/PASSWORD fields
8. Check the AUTO CONNECT AT STARTUP box
9. Select the SAVE CHANGES button
10. Automatic authentication will occur the next time the webMenus application is restarted

---

### **Retry Connection Every Minute**

When selected, the RETRY CONNECTION EVERY MINUTE OPTION will attempt to reconnect the webMenus application to the backend webNetwork System after a failed connection attempt. This option is very useful for machines that are slow in establishing their network or wireless connections.

---

### **Ignore Certificate / SSL Warnings**

When selected, the IGNORE CERTIFICATE option will accept any SSL certificate that is presented to the webMenus application. This feature is useful when connecting to a webNetwork System that does not have a valid SSL Certificate installed. If you are evaluating Stoneware's webNetwork and have enabled SSL this option will need to be checked because the evaluation version is using a "Self-signed" certificate.